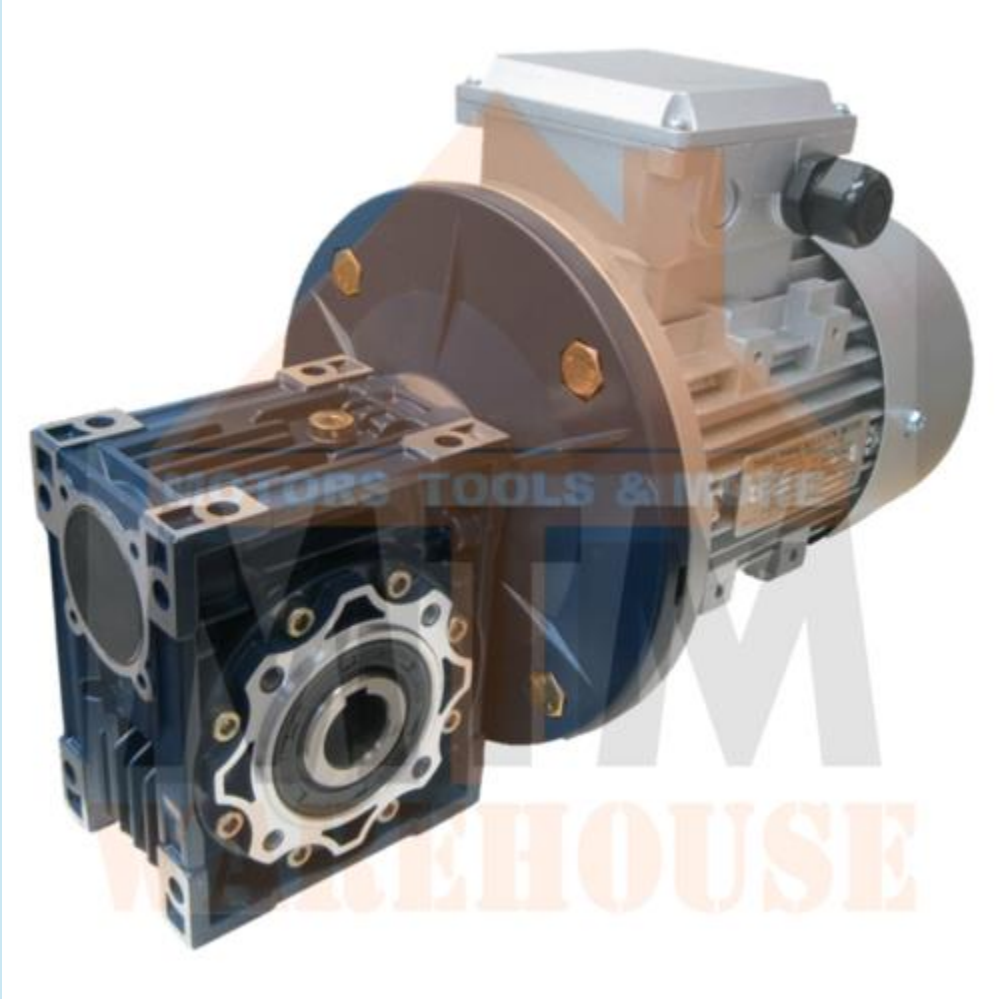


Three Phase 0.55kW 0.75HP 280rpm Electric Motor and Worm Gearbox Drive





Three Phase 0.55kW 0.75HP 280rpm Electric Motor and Worm Gearbox Drive

0.75HP 280rpm Electric Motor and Worm Gearbox Drive

Power (0.75HP)
Three Phase 50Hz
Speed: 280rpm
Torque: 17Nm
Shaft size: 18mm (Hollow Output Shaft)
Type 40
Ratio: 1
Efficiency: 1.8 f.s.

Power Rating
Colour - Silver Colour
Construction with top mounted terminal box
Insulation
Type
Fan Cooled
Bearings, grease packed for life
Resistant to vibration

Notes:

Notes

es

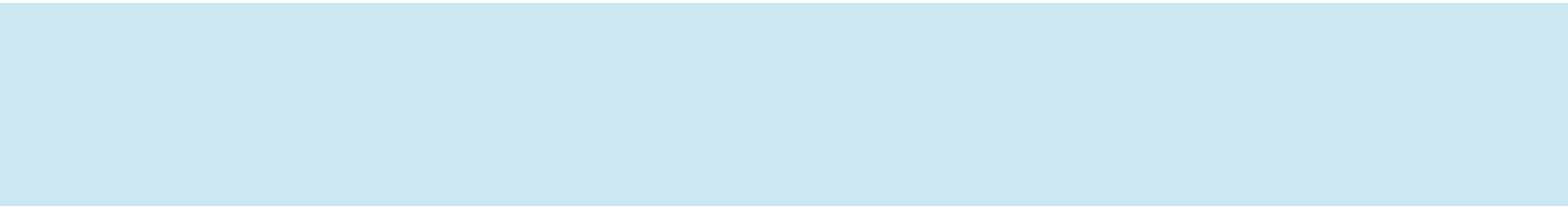
evices
acy Packaging

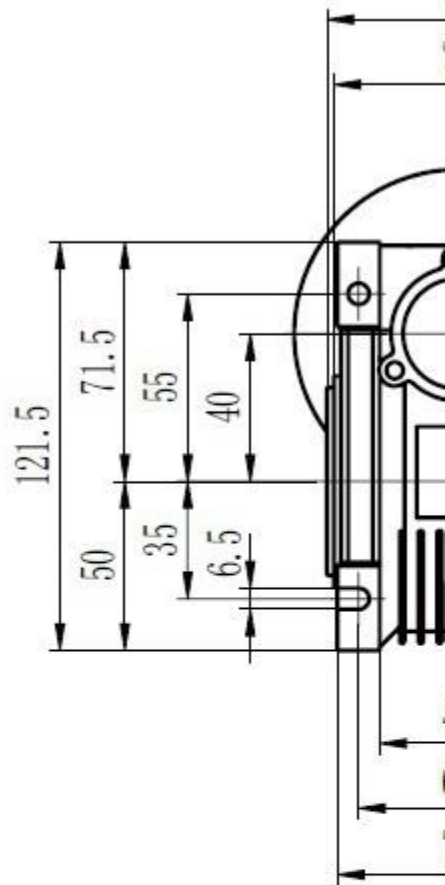
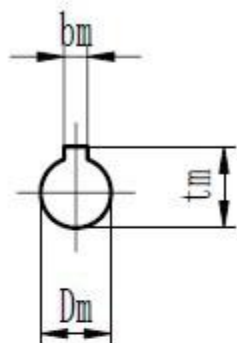
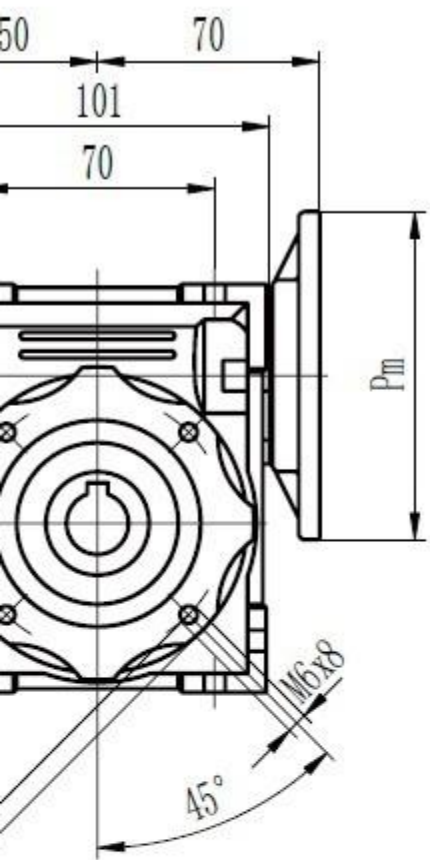
ng

s (Available on request):

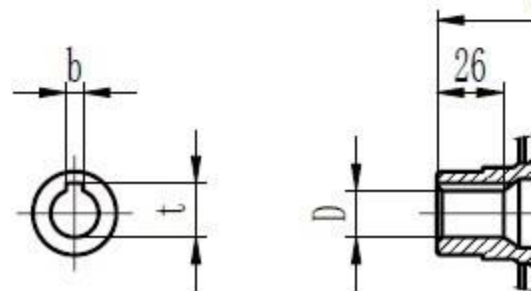
s

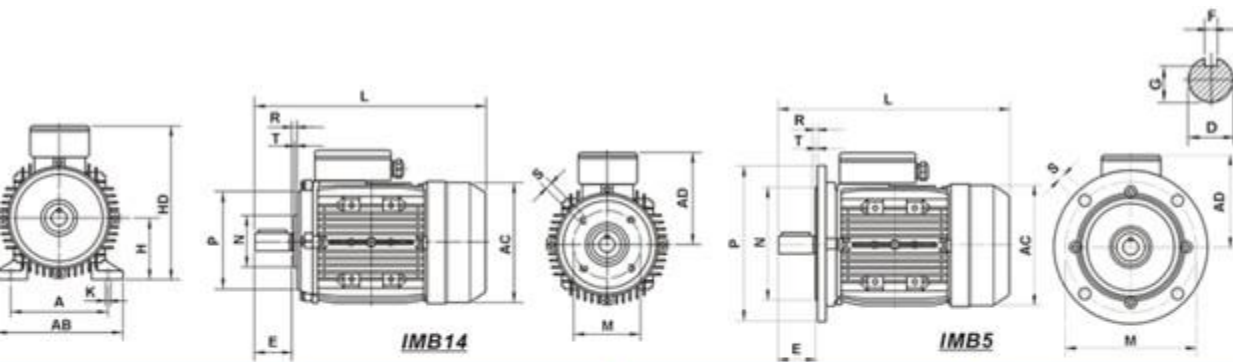
osting is for IMB14 motor, we can also provide IMB5)





Output		
8	b	t
6	6	20.8





IMB3				IMB14				IMB5				All Dimensions in mm										
L	E	F	G	H	K	M	N	P	R	S	T	M	N	P	R	S	T	AB	AC	AD	HD	L
1	23	4	8.5	63	7	75	60	90	0	M5	2.5	115	95	140	0	10	3.0	130	130	115	190	230
4	30	5	11	71	7	85	70	105	0	M6	2.5	130	110	160	0	10	3.5	145	145	125	210	255
9	40	6	15.5	80	10	100	80	120	0	M6	3.0	165	130	200	0	12	3.5	160	165	135	240	295
4	50	8	20	90	10	115	95	140	0	M8	3.0	165	130	200	0	12	3.5	180	185	145	270	360
8	60	8	24	100	12	-	-	-	-	-	-	215	180	250	0	15	4.0	205	215	170	280	380

Available in both Single and Three Phase electric motors between 0.18Kw to 315Kw in 2 pole.

We do not deliver to PO Boxes. Please make sure you have a residential address in your details for us to send your order to.

[Local Pick up from our Sydney, Prestons Warehouse available.](#)

Buy from a professional Business with many years experience in this market. DO NOT compare this product with other cheap ones. This is a very high quality motor. Limited Time Offer. QUALITY at the right PRICE. This crazy price will not last long.

Payments Methods Accepted



[Listing Details](#)

purchase from any of our eBay listings you are entering into a contract governed by our terms & conditions below. Please ensure you are making your

demonstration purposes only. Product will match description but may vary from images shown. For any concerns about how to use the product, please contact us. We are not responsible for any damage or loss of any kind during shipping.

Price/stock levels is accurate to our knowledge. All errors or omissions are unintentional. If problems are encountered, please contact us.

Payment

Payment must be received within 5 days of sale. Payment can be made by Cash on pick-up (from our Warehouse), Paypal, credit card (over the phone) or bank transfer. Payment must be shipped out unless payment has been made.

Shipping/Delivery/Pick up

Click on the shipping tab at the top of our listing for all freight costs and delivery times. Your order will be sent through one of our delivery partners: Australia Post, E-Go, Go Logistics and Australia Post. The service used to deliver your order will be automatically selected by our system. We are not responsible for postal delays or lost/damaged parcels, but we will assist the buyer to locate or to obtain a replacement.

Please provide a valid street address for all deliveries. We do NOT deliver to PO Boxes, Parcel Lockers or Post Office addresses. We also require a daytime phone number. Our business hours for dispatch are Monday to Friday 9am to 2:30pm. In the unlikely case that you do not receive your order, please contact us.

Local Pickup from our Sydney, Prestons Warehouse available.

Warranty

As follows:

- Generators have 3 months warranty
- Engines have 12 months warranty
- Accessories have 6 months warranty

For any warranty claims with the product, please contact us through eBay and include the original purchase information (i.e. your name, address, email and phone number).

The warranty does not include damage caused by normal wear and tear, accidents, misuse, lack of maintenance, neglect, natural disaster, or other external factors. The equipment must be used in a manner outside that described in the instructions. The warranty is considered void if the item has been modified or repaired by anyone not authorised by us to provide service (with the exception of standard periodic maintenance). Consumables and accessories such as belts, cables, wheels, blades, tubs, pads, nets etc. are also not covered once used or for damage caused by general wear and tear.

If a fault is determined, the resolution we can offer may vary. To assist with a quick resolution, photos of the damaged part/unit will be required. We will repair or replace, at our discretion, any unit determined to be within the warranty period. Where necessary, the item may need to be returned to us.

for all shipping costs associated with any warranty claim.

must first be authorised in writing by our Customer Service Team and given a Return Authorisation Number (RAN). We will issue a Return Authorisation Number (RAN).

Once authorised, it is the buyer's responsibility to ensure the product is packaged securely to prevent any damage during the return process. A refund may be offered, which may include repairs, replacement items or store credit at our discretion.

Typically, the outcome of the inspection should take no longer than 10 business days from the date the item is received by our service department.

Refunds will not be accepted in cases where the buyer has contributed to the failure, or been misleading in their description of their issues. In the event that we are required to return your item for inspection, reimbursement to us may be required prior to releasing the goods. The item is also subject to a restocking fee. Freight cost not to exceed original freight cost. Payment is to be made to us within 7 days of being notified of warranty repair. Interest is charged at 5% per week of the original product cost until the credit expires. Where money is owed to us for repairs and/or postage, we will require full payment is made.

Returns/Exchanges

Claims must be made within 7 days of the delivery date. After 7 days, any claims of delivery errors or requests for returns or exchanges will not be accepted.

Returns will only be accepted if the item(s) are returned in an unused, clean, sellable condition with original packaging, subject to our inspection.

If the item is damaged in transit, or is not returned as noted above, a revised refund amount may be required.

Refunds will be issued less the delivery cost. All exchanges will incur a return delivery fee.

We reserve the final authority on whether the products should be refunded or replaced and make no other warranty and no implied warranty of merchantability or fitness for a particular purpose. Our maximum liability hereunder is limited to the purchase price of the products. In no event shall we be liable for consequential, indirect, incidental or special damages of any nature arising from the sale of the product.

To request a return and with to return an item, please send us a message stating your name, order number, the item(s) you wish to return, and the reason for the return. Our customer service team will respond to your email and, if applicable, written authorisation for the return will be given. All other relevant information will be provided. We will not accept the return of any item(s) without our prior authorisation.

Feedback

We strive to maintain an excellent customer service so if you have any issues or inquiries about your purchase, please feel free to contact us. We would be happy to help. Please do not leave negative feedback before contacting us.

Feedback left without any contact will be regarded as an indication of the conclusion of the transaction.

By placing a bid or buying, you have agreed to all the conditions mentioned above.

