

1600W Electric Hand-Held Mixer



Please read and understand owner's manual before operating the machine, keep well the manual. Don't operate the machine until you read the manual and understand the operating and troubleshooting for the machine.

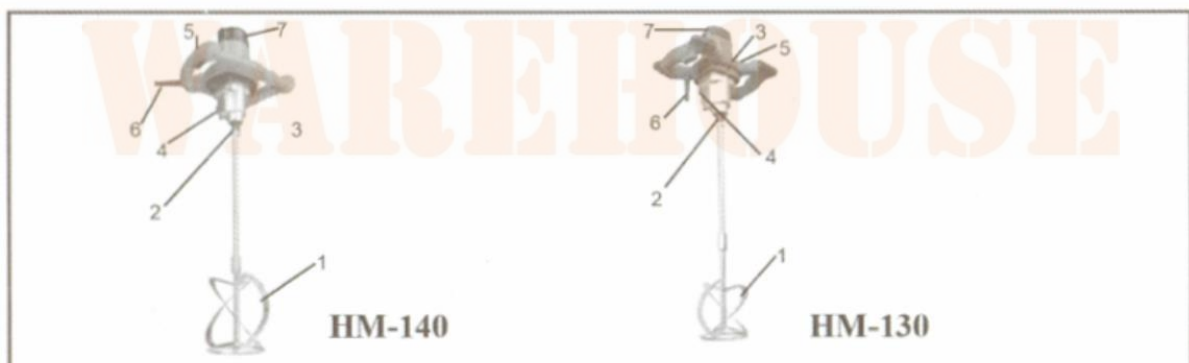
Contents

1. MAIN COMPONENTS	2
Single Mixing Tool	2
2. PRODUCT DESCRIPTION	3
3. CAUTIONS	3
4. MIXING TOOLS CHOICE	4
5. MAINTENANCE	4
6. OPERATION	5
Single Mixing	5
Start the Machine	6
ELECTRONIC SPEED REGULATOR OPERATION INSTRUCTION	6
Stop the machine	6
7. PART LIST	7

1. MAIN COMPONENTS

Single Mixing Tool

1. Mixing Tool (Paddle)
2. M14 Tool Connection Shaft
3. Electronic Speed Regulator
4. I II Speed Switching Poker Rod
5. Switch Rest-Lock Knob
6. Start Switch
7. Motor Housing



2. PRODUCT DESCRIPTION

The mixer is an electrically powered mixer that is also fitted with double counter-rotating mixing with a single mixing tools also available. It is used for mixing building material, chemical material as well as heavy materials quickly and thoroughly. For the difficult mixing materials, such as high-density mortar, dried building materials, two more kinds of mixed materials, it will pose no problem mixing them. Different mixing tools are available for the mixer and the different I II speed meet the demand of different materials mixing.

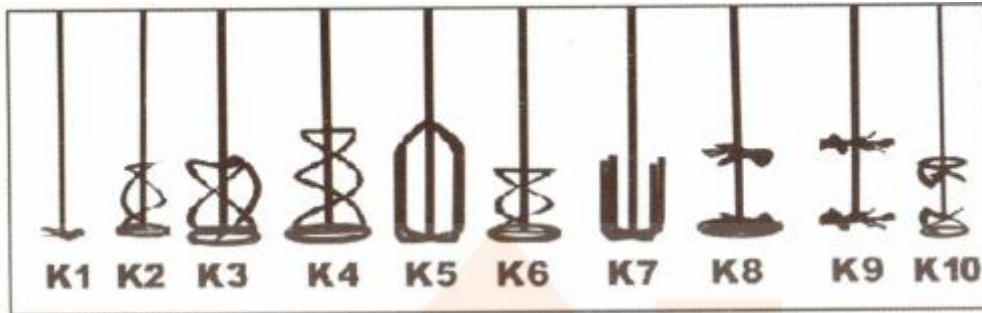
3. CAUTIONS

Please read and follow these instructions before operating the mixer. If not followed may cause unpredictable results! For people and machine safety, please follow it!

- DO check the safety situation when the machine is in operation!
- DO operate the machine in the suitable working space!
- DO keep other people away from the working space!
- DO avoid the machine when operating in a damped working space!
- DO provide the working space with sufficient lighting!
- DO check the power source/voltage is the same as shown on the label!
- DO check the machine has earth protection attachment on!
- DO check the plug is not defected or tampered!
- DO pull out the power source when the machine is not operating, maintenance or changing mixing operation!
- DO keep the cable from heating, dampness or scratches!
- DO use authentic spare parts for maintenance!
- DO use safety wear such as goggle and ear plugs when operating machines
- DO NOT let the machine overload!
- DO NOT let the machine be too far from the plug!
- DO NOT pull the cable to disconnect the plug from the socket directly!
- DO NOT mix the material which is flammable pass 21° C!
- DO NOT use solvent when cleaning the tools!
- DO NOT install and operate the machine in a working space with flammable or explosive items around!
- DO NOT use the sliding or movable mixing drum!
- DO NOT start the mixer until the mixing tools is in a drum!
- DO NOT run the mixer on idle!
- DO NOT take out the sample until the machine has stopped!
- DO NOT touch the mixing drum when the mixer is in operation!
- DO NOT start the mixer when the dried materials are in or stuck to the drum!

4. MIXING TOOLS CHOICE

For the mixer with double counter-rotating tools, we supply P1 mixing tool as standard fittings.



For the mixer with single mixing tool, we supply K3 mixing tools as standard fitting. K1-K10 mixing tools are also available for special use. They come in M14 screw connection or Hex Quick Coupling.

5. MAINTENANCE

Correct maintenance for the machine can prolong the product life.

- The handle switch must always keep in proper function and good maintenance.
- The mixing tools should be cleaned when the operation is finished or not used for a long time. Normally, the flowing water or quartz sand can clean the mixing tools well.
- Do not force any stress in the machine because it will damage the mixer.
- The mixing shaft must always be antipollution.
- The hole of hexagonal socket must always be put protecting cover.
- The vent for the motor housing can not be covered when the machine is in operation.
- There can not be any flammable materials in the machine.
- The vent must be cleaned regularly.
- Only authentic part must be used in the machine.
- The carbon brush must be checked and maintained when the machine is operating for up to 60 hours.
- Please change the brush when there is indication of wear.
- The operation details can be seen in the figures below;
 - (Picture 1): Cut the power first and take apart the motor housing.
 - (Picture 2): Pull the plate out then replace the carbon brush.



Picture.1



Picture.2

6. OPERATION

Single Mixing

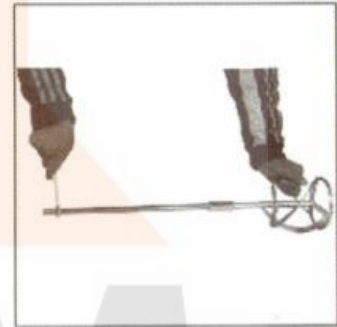
- (Picture 3): Take out the two parts of the mixing tools from the carton.
- (Picture 4): Fitting the two parts.
- (Picture 5): Use the wrench until it is tightened.



Picture 3



Picture 4



Picture 5



Picture 6



Picture 7

- (Picture 6): Put the M14 mixing tools to the outlet shaft.
- (Picture 7): Turn the screw of the mixing tools to the direction of the old position, and the mixing tool is tightened.

Start the Machine

Push down the switch rest-lock knob first and then push down the start switch;

Mechanical speed regulator operation instruction:

- a. When the machine is under "STOP" condition, please turn the knob switch to change the speed.
- b. When you can not turn the knob to change the speed completely, please turn the shaft paddles slightly and change speed.

ELECTRONIC SPEED REGULATOR OPERATION INSTRUCTION

Turn on the power switch first, then turn the regulator switch which is located in the left handle to get the speed you wanted.

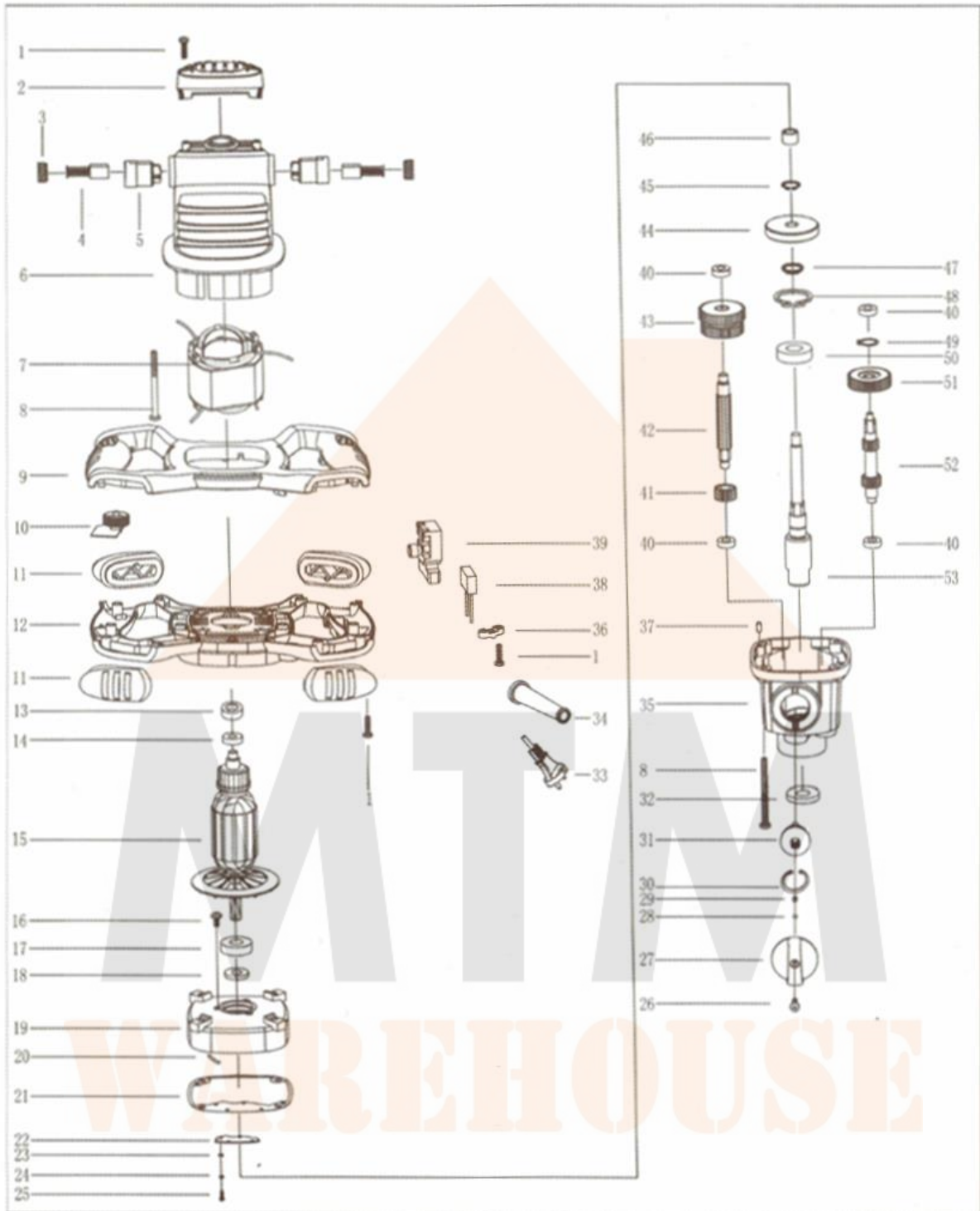


Stop the machine

Loosen the start switch so the machine will be stopped.

WAREHOUSE

7. PART LIST



Part no.	Description	Quantity	Part no.	Description	Quantity
1	Screw ST3.8x13	2	28	Ball	1
2	Rear cover	1	29	Speed spring	1
3	Carbon brush cover	2	30	Circlip 28	1
4	Carbon brush	2	31	Speed shift PLE	1
5	Brush holder	2	32	Oil cover 21x26x5	1
6	Housing	1	33	Cord	1
7	Stator	1	34	Sheath	1
8	Screw ST4.8x55	4	35	Gear box	1
9	Upper handle	1	36	Pressboard	1
10	Speed control	1	37	Pin 4H8x8	1
11	Runner corner	4	38	Capacitor	1
12	Down handle	1	39	Switch	1
13	Bearing holder	1	40	Bearing 628/8	4
14	Bearing 608	1	41	Third initiative gear	1
15	Rotor	1	42	Third initiative spindle	1
16	Screw M4x16	3	43	Second driven gear	1
17	Bearing 6001	1	44	Big gear	1
18	Wool ring	1	45	Circlip 15	1
19	Middle cover	1	46	Bearing HK1010	1
20	Corduroy	1	47	Circlip 17	1
21	Oil washer	1	48	Circlip 35	1
22	Oil por cover	1	49	Circlip 10	1
23	Flat washer	4	50	Bearing 6003	1
24	Spring washer	4	51	First driven gear	1
25	Screw M3x10	4	52	Second driven gear	1
26	Screw M4x14	1	53	Spindle	1
27	Speed shift knob	1			

WAREHOUSE

Address: 5 Lyn Parade, PRESTONS, NSW 2170

E-mail: sales@mtmwarehouse.com.au

Telephone: (02) 9607 4300