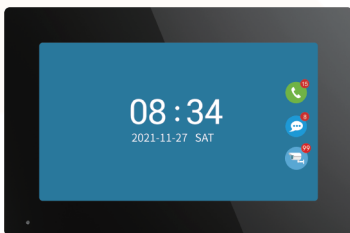


## 4 Wire Video Door Phone



## 1 Function

### Outdoor doorbell

<b>Resolution</b>	2Mega pixels, 140 Horizontal angle
<b>Night vision</b>	IR CUT no color deviation, B/W night vision
<b>Unlock</b>	Power on or off unlock, unlock delay time setting by indoor monitor

### 7, 10.1 inch capacitive touch 1024\*600 indoor monitor

<b>Connect</b>	Connect up to 2 outdoor doorbells and 6 indoor monitors, the indoor monitors can talk to each other
<b>Network</b>	Master indoor monitor connects 2.4G WiFi 802.11 b/g/n
<b>Power adapter</b>	Outdoor doorbell and indoor monitor share a 12V 2A power adapter
<b>Function</b>	Take photo, take video, unlock, lock delay, motion detection calendar, adjust brightness, contrast, color
<b>TF Card</b>	External TF card to save photos or videos, leave messages

### Tuya Smart or Smart Life APP

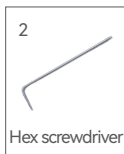
<b>Tuya APP</b>	20 App users connect to the system, users can talk to visitors anytime and anywhere, take photo or video, monitor, unlock, cloud storage
<b>Message</b>	Push photo to APP when motion detection or call
<b>Playback</b>	Video recording after the call or motion detection

## 2 Outdoor doorbell

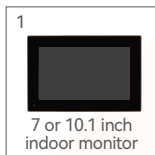


### 3 Packing list

#### Outdoor doorbell

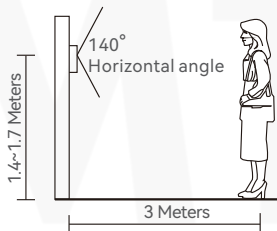


#### Indoor monitor

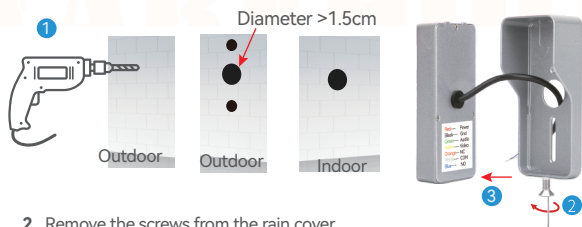


### 4 Installation diagram

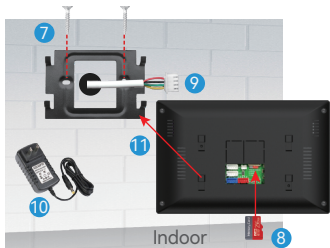
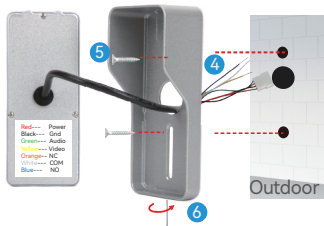
The outdoor doorbell is installed at a height of 1.4~1.7 meters, try to avoid the sunshine and rain, Using 2 screws or tape fixed the outdoor doorbell on the wall, wooden board, door, It can also be installed on the 86 box.



1. Use the drill bit to drill three holes. One hole is large enough to pass through the 4pin cable, use anchors if user install outdoor doorbell on brick or concrete.



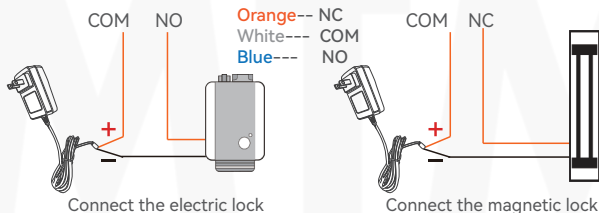
2. Remove the screws from the rain cover
3. The rain cover is separated from the doorbell



4. The 4pin cable goes through the hole in the wall
5. Fix the rain cover with two screws
6. Plug the rain cover on the doorbell and fix the bottom screws
7. Fix the hanging plate to the wall with two screws
8. Insert the MicroSD card to the slot of indoor monitor
9. Connect the other end of the 4pin cable to Door1 or Door2 of the indoor monitor
10. Connect the indoor monitor to a 12V 2A power adapter
11. Hang the indoor monitor to the hanging plate

## 5 Schematic diagram of connect the lock

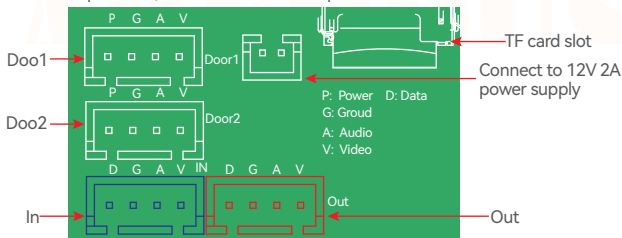
**Note:** Unlock voltage is 12V. Pls check the ower supply specification to purchase separately.  
Please set the unlock delay time in the master indoor monitor.



## 6 Connect outdoor doorbell and indoor monitor

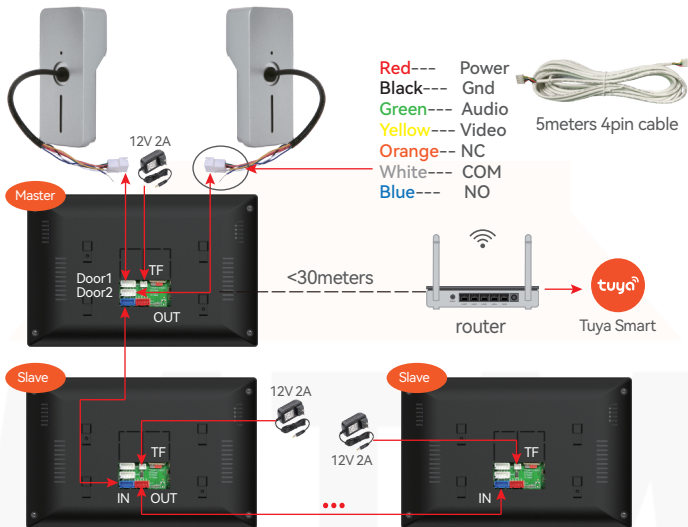
Door1, Door2:

Connect the 4pin cable, the other end of the 4pin cable connects to the doorbell.

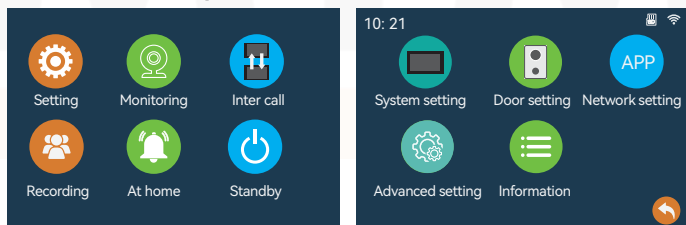


In: Connect the 4pin cable, the other end of the 4pin cable connects to the "Out" of the last indoor monitor  
Out: Connect the 4pin cable, the other end of the 4pin cable connects to the "In" of the next slave

1. The 4pin port of the outdoor doorbell same as that of the indoor monitor.  
The other end of the 4pin cable is connected to "Door1" of the indoor monitor.  
If there are two outdoor doorbell, the other outdoor doorbell is connected to "Door2"
2. Connect up to 2 outdoor doorbells and 6 indoor monitors.

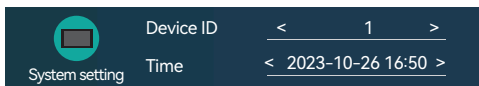


## 7 Indoor monitor operation introduction



### System setting:

**Device ID:** Master indoor monitor setting connected to outdoor doorbell, Master indoor monitor ID setting to 1. ID of slaves are setting sequentially 2, 3, 4, 5, 6.



**Standby clock switch:** on/off

**Language:** Chinese, English, Russian, German, French, Spanish, Italian, Polish, Portuguese, Turkish, Traditional Chinese, Japanese, Korean, Arabic, Vietnamese

**Keytone switch:** on/off

**Ring back:** on/off

**Door settings**

**Note:** Below setting by the main indoor monitor, the slave synchronizes the settings.

**Enable switch:** Please check whether the outdoor doorbell is connected. If only one outdoor doorbell is connected, please turn off the enable of the unconnected outdoor doorbell.

**Unlock delay:** Set the time of close lock.

**Record mode:** Take video or photo when visitor calls or motion detection is triggered.

**Motion detect switch:** Motion detection enabled or disabled.

**Motion detect sensitivity:** low/medium/high

**Motion detection duration:** After triggering motion detection, set the recording time

**Message switch:** Turn on/off the leave a message.

**Message time:** Set the leave a message time.

**Signal mode:** PAL/NTSC/Automatic

**Signal type:** The signal type is AHD1080, if user connect to other analog outdoor doorbells, please select the signal format, Select automatic detection, so that the door phone can be used normally. Support AHD1080/AHD720/TVI720/TVI1080/CVI720/CVI1080/CVBS.

**Ring setting:** Can setting by slave indoor monitor

Set the ringtones for 3 time periods, the ringing time of the ringtone, choose one of 10 ringtones, Ringer volume 0~10

**Network setting** (Can only be set on the master indoor monitor)

The master indoor monitor is connected to 2.4G WiFi, include "EZ Mode" and "AP Mode", for specific operations, please refer to "9 Add Device" below.

**Advanced settings**

Format SD disk, Factory Settings, Software upgrade, restart system.

**Information**

Software version, Release date, SD remain space, UUID

2. Click "Monitoring" button or after visitor presses the "call" button of the outdoor doorbell.



Monitor next doorbell

Take a photo



Adjust the brightness,  
Contrast,  
saturation

Video



Zoom out

Unlock



Talk



Hang up



Zoom in



Talking: User is talking with the visitor.



This icon will appear after visitor presses the "call" button of the outdoor doorbell. If user find that visitors are looking for another indoor monitor, User can transfer to another indoor monitor to talk with visitor.



3. After clicking "Inter call", user can call other indoor monitor.



4. Click "Recording" to display the record of call, message, Motion. Short press the file to play video or browse the photo, long press to select "Delete", "All delete", "all read".



Call



Message



Motion

## 5. Working modes

**Note:** The indoor monitor needs to insert the TF card and the message is enabled.

- 1. At home:** After the visitor presses the "call" button, the indoor monitor rings, Tuya APP will receive the call or receives the push, and if the call is not answered, outdoor doorbell will prompt to leave a message.
- 2. Not at home:** After the visitor presses the "call" button, the visitor will be prompted to leave a message, Tuya APP will receive the push.
- 3. Dormant:** When calling, neither the outdoor doorbell nor the indoor station have ringtones or prompts, the APP will receive the call.

## 8 App Download

1. Search "Tuya Smart" or "Smart life" from APP store or Google Play according to phone system.
2. Scan the QR code below to download.



## 9 APP register & login

1. Please register when using APP for the first time.
2. After logging on the APP, please add devices after creating a family. At the bottom right corner of the APP homepage, click "Me" -> "Home Management" -> "Create a home", fill in the information and save it. The user who adds the device will become the family owner and can set the family owner or general members.
3. After the home owner adds the device, the home members will add the device automatically. After adding this doorbell, all home members have unlock function than shared accounts. User can add 20 administrators or home members.
4. The video doorbell is a device with a higher security level, the device must be removed from the original account before it can be bound to another account.

## 10 Add Master indoor monitor to APP

**Note:** Only the main monitor can connect to APP, and the slave monitor cannot. Click "Settings"  to enter "WiFi"  to connect to WiFi.

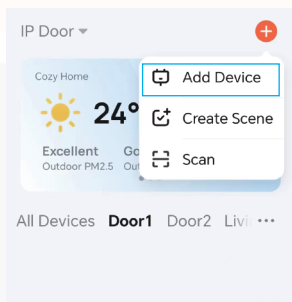
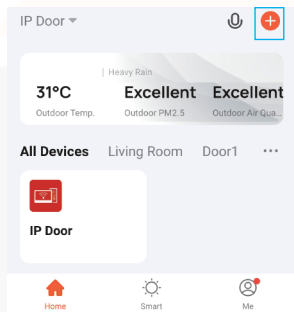
### 1 Click 'Connect WiFi'

Select the WiFi you want to connect to. only connect to the 2.4GHZ band. Then enter the WiFi password. The IP address and MAC will then be displayed. But the cloud service is "unconnected".

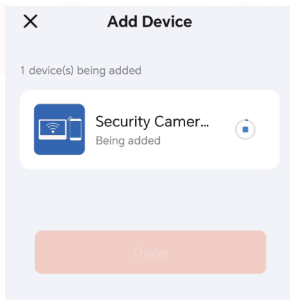
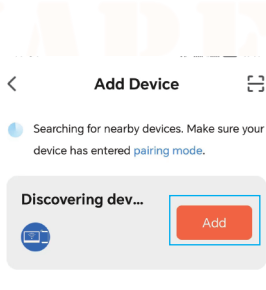
Cloud services	Unconnected
IP address	
MAC	f0:c8:14:d0:a6:08
WLAN	Connect WiFi >

Connect your smart phone to the same 2.4Ghz WiFi which connected to the monitor.

### 2 Click "+" -> "Add Device" in the upper right corner of the APP.



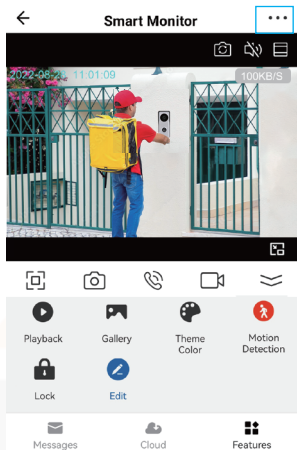
### 3 Click "Add" and wait for about 1 minute to add the doorbell to the APP.



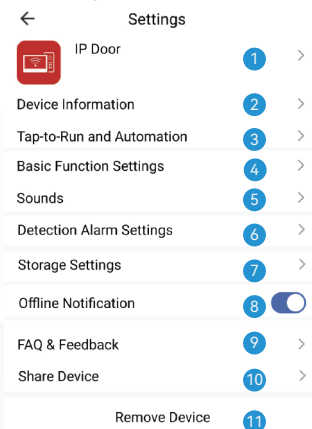


## 11 Live video

Click on the device on the homepage of APP to enter the living screen, user can take photos, talk, video, unlock, playback(stored in the MicroSD Card), and view albums.



Click the button in the upper right corner to enter the setting interface.



Unlock: Unlock and save all records.

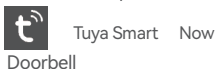
Message: Take photos and videos during incoming calls or motion detection.

Cloud: The photos and videos stored in the cloud server during incoming calls or motion detection, do not worry about losing the doorbell.

- 1 Modify icon, name, location of device.
- 2 View IP address, ID, time zone.
- 3 Configure the device automation.
- 4 The screen horizontal mirroring.
- 5 Adjust the volume of the doorbell.
- 6 Motion detection on/off, set the alarm sensitivity and the alarm time period.
- 7 Check the capacity of the memory card, and format the memory card.
- 8 The device will push the alarm information list to the APP after 30 minutes
- 9 Please check the common problems carefully.
- 10 Enter the mobile phone number or email address of the user you want to share, click "Finish", the shared user cannot unlock.
- 11 After removing the device, the device will not be displayed on the device list. Connect this doorbell to the computer in Europe <https://protect-eu.ismartlife.me>, Connect this doorbell on the computer side of the United States <https://protect-us.ismartlife.me>, The PC can talk, take pictures, and video.

## 12 Motion detection and call

1 After the visitor presses the call button, push notifications online.



2 The mobile phone standby state is pushed notifications as follows.

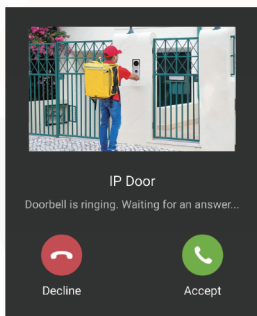


### Motion detected

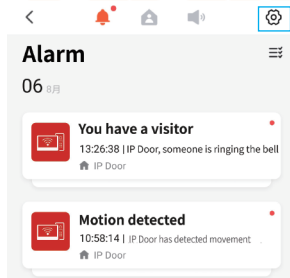
IP Door has detected movement

### You have a visitor

IP Door, someone is ringing the bell

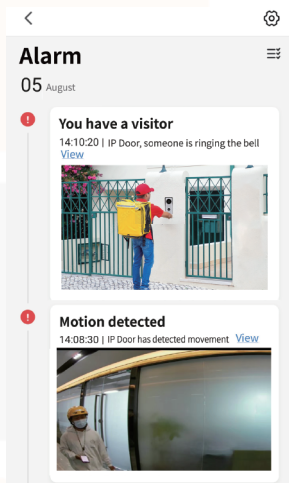


Click the "Settings" icon in the upper right corner to enter the notifications push settings



2.1 Click the "Motion detected" to enter the alarm message

2.2 Click the "You have a visitor" to enter the living video.



### Notifications Setting

- Enable Notifications
- Alarm
- Do-Not-Disturb Schedule Not set >
- Home
- Bulletin